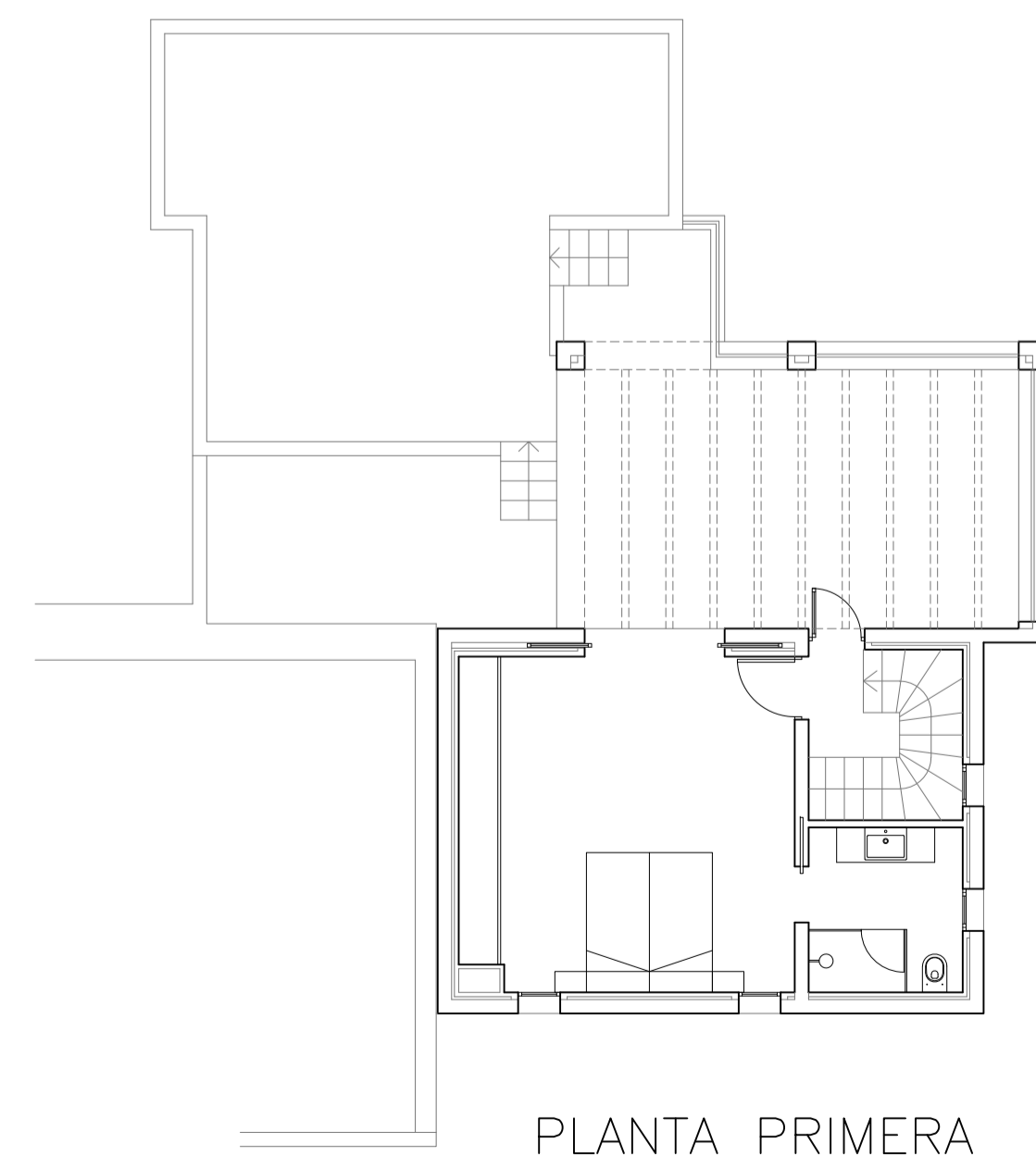


PLANTA BAJA

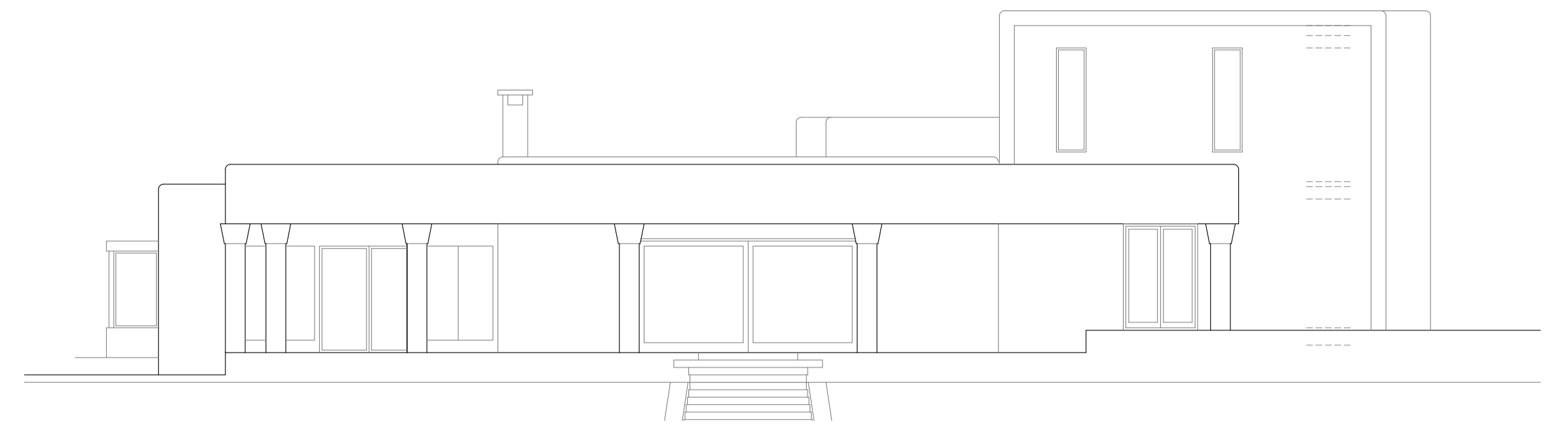


CUADRO DE SUPERFICIES (M2)

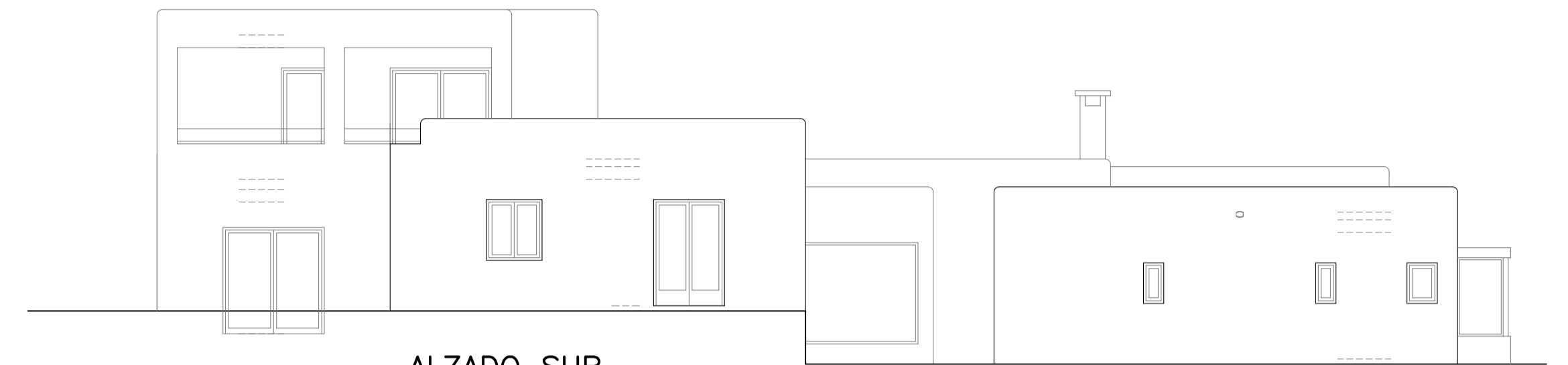
	CONSTRUIDA CERRADA	PORCHES 50%	CONSTRUIDA TOTAL
PLANTA BAJA	258.40	50.27	308.67
PLANTA PRIMERA	42.90		42.90
ALMACENES ANEXOS	43.90	8.27	52.17
TOTAL	339.79	61.23	401.02



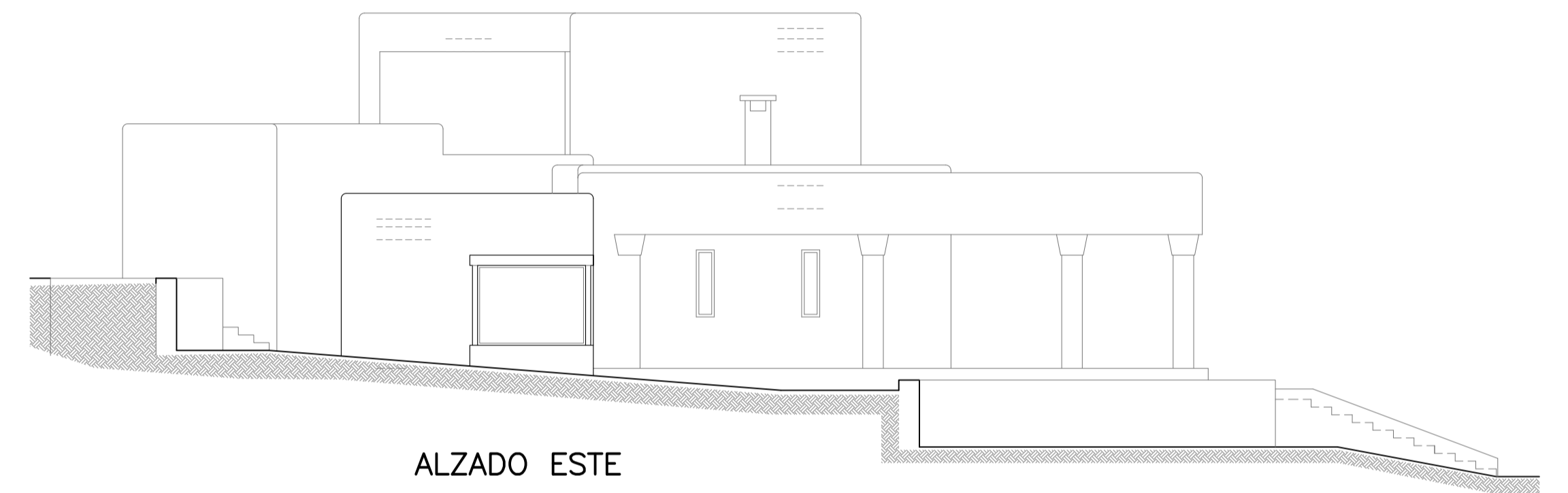
PLANTA PRIMERA



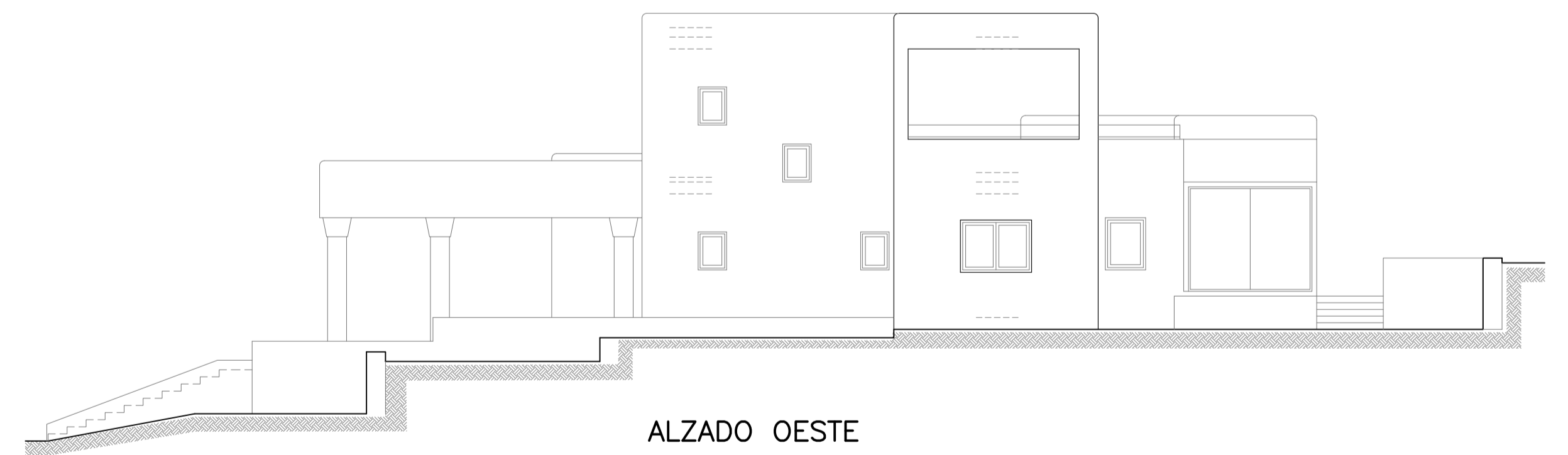
ALZADO NORTE



ALZADO SUR



ALZADO ESTE



ALZADO OESTE