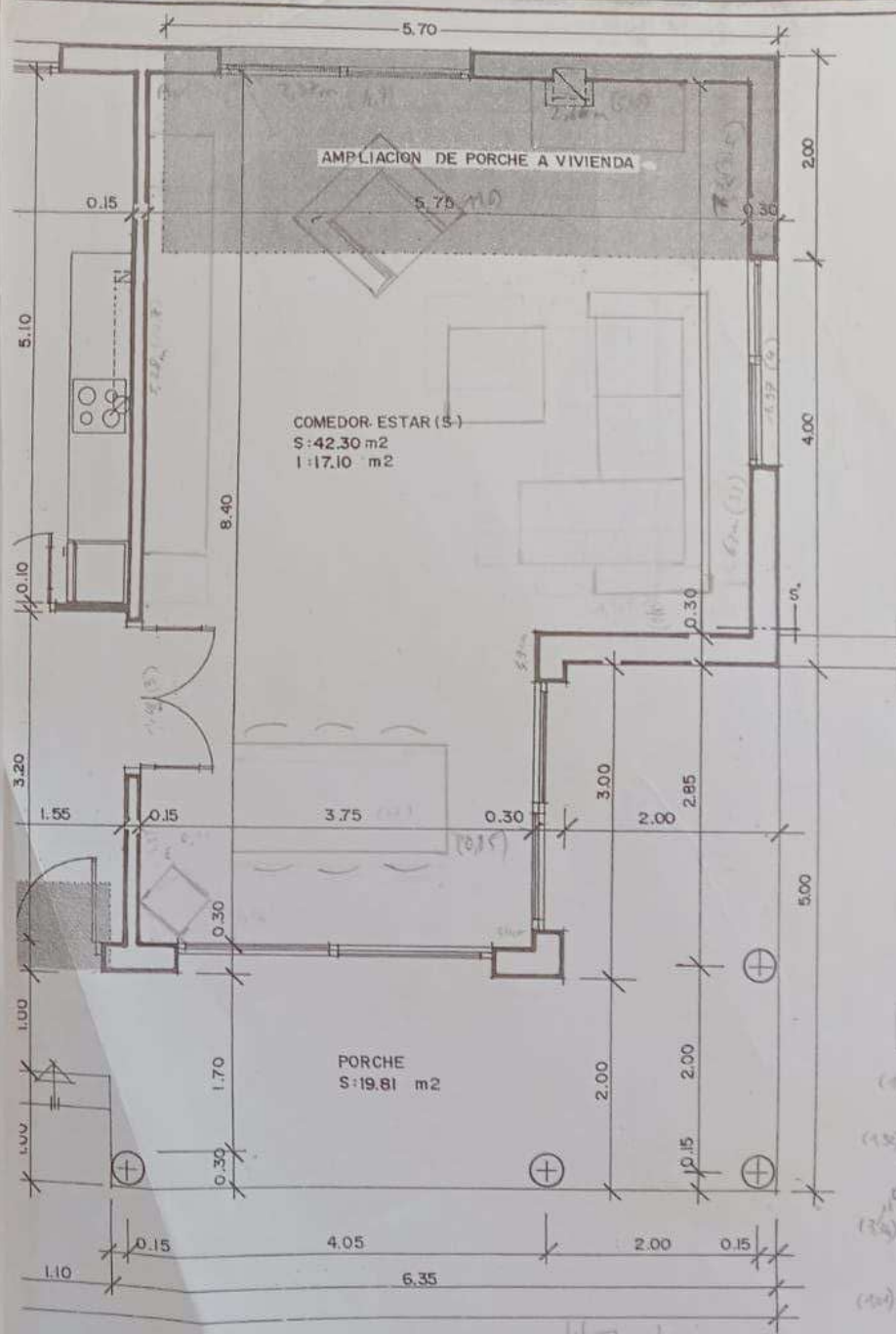


### PLANTA BAJA

SUP. CONSTRUIDA TOTAL : 136,83 m<sup>2</sup>  
 50% SUP. PORCHE : 9,91 m<sup>2</sup>

SUP

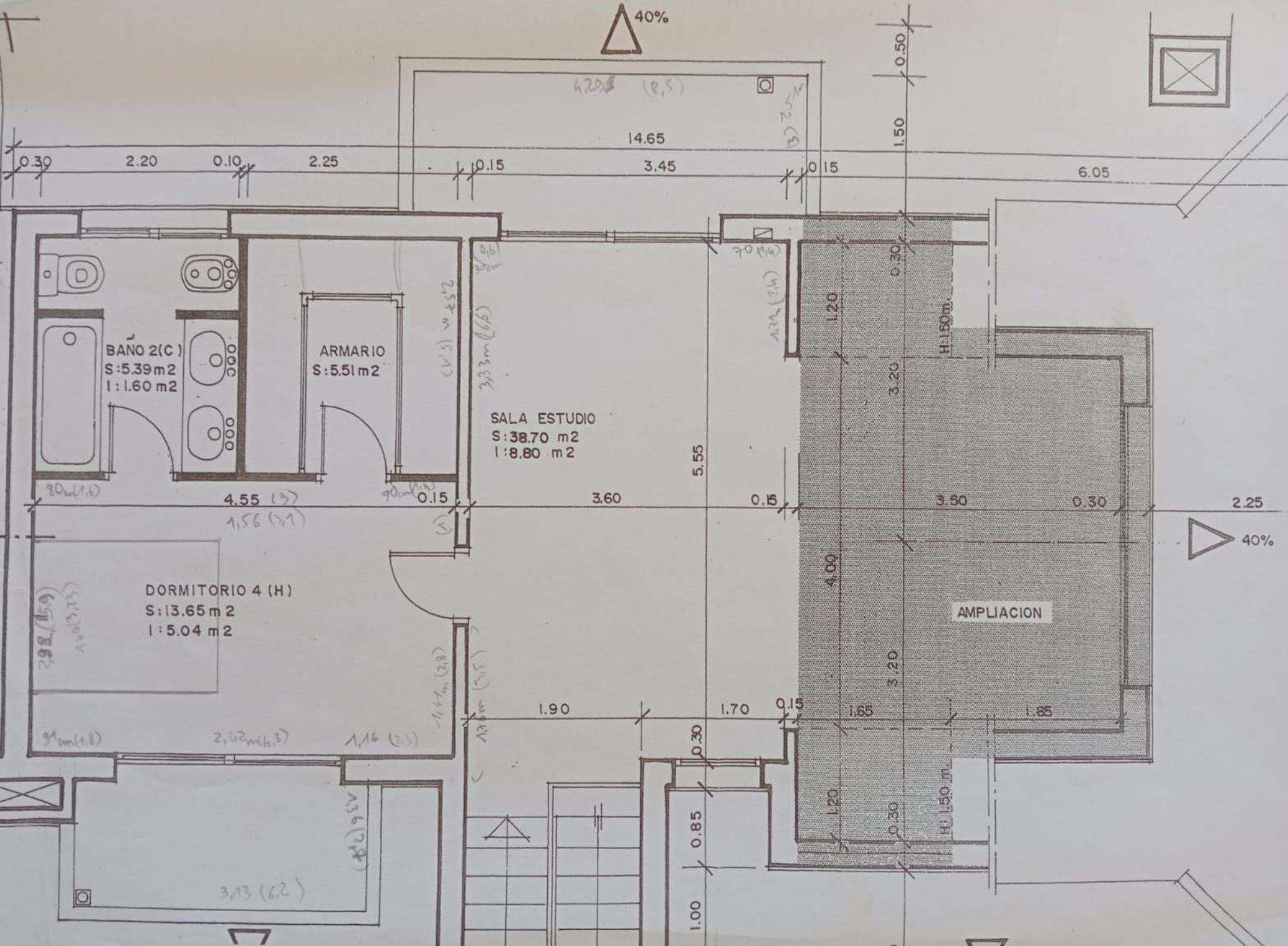
S. Ov. 11.11.63



### AMPLIACION DE PORCHE A VIVIENDA: 12,74 m<sup>2</sup>

Handwritten calculations:  
 $2,21 \times 110 = 243$   
 $(5,70) \times (2,22) \times (244)$

PROY. DE E.  
 EMP.  
 VISAL  
 DENC  
 ESCA  
 ARQU  
 PROP



4.20 (8,5)

14.65

3.45

1.50

6.05

BAÑO 2(C)  
S: 5.39 m<sup>2</sup>  
l: 1.60 m<sup>2</sup>

ARMARIO  
S: 5.51 m<sup>2</sup>

SALA ESTUDIO  
S: 38.70 m<sup>2</sup>  
l: 8.80 m<sup>2</sup>

DORMITORIO 4 (H)  
S: 13.65 m<sup>2</sup>  
l: 5.04 m<sup>2</sup>

AMPLIACION



0.30

2.20

0.10

2.25

0.15

0.15

80 cm (1.6)

4.55 (9)  
1.56 (3.1)

0.15

3.60

5.55

0.15

3.50

0.30

2.25

2.98 (5.9)  
1.10 (2.2)

91 cm (1.8)

2.62 m (5.3)

1.16 (2.3)

1.44 m (2.9)

1.75 m (3.5)

1.90

1.70

0.15

1.65

1.85

0.30

1.00

0.85

1.20

0.30

3.20

4.00

3.20

1.20

0.30

H: 1.50 m

H: 1.50 m

300 (6)

333 m (6.6)

70 (1.4)

1.20 (2.4)

1.82 (3.6)

3.13 (6.2)