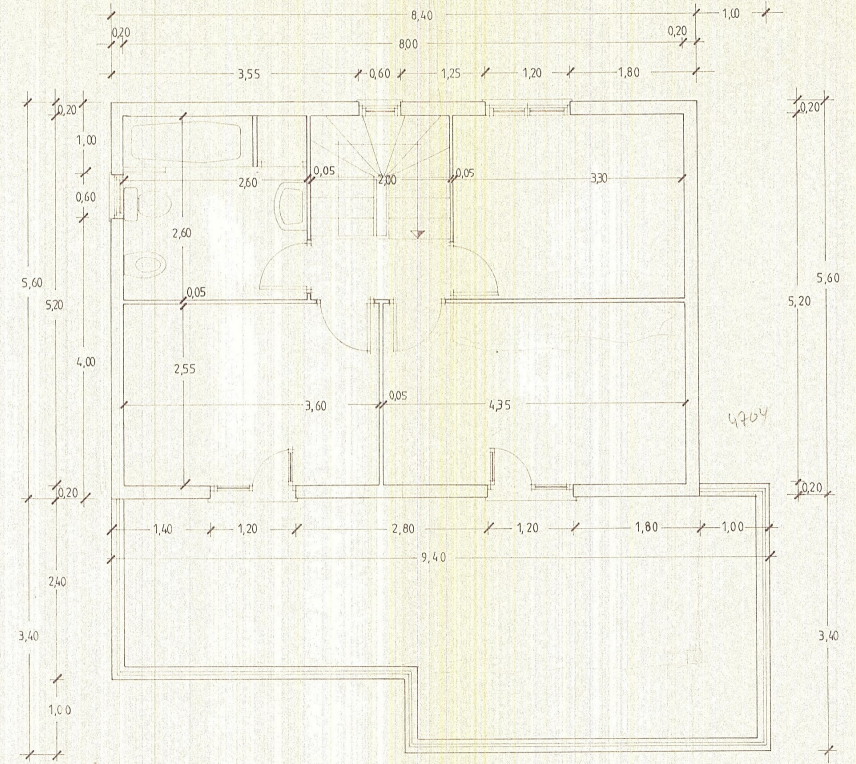


COTAS PL. BAJA

$9,40 \times 9,00 = 84,60$
 $- 1,00 \times 5,40 = - 5,40$
 $- 1,00 \times 4,20 = - 4,20$
 $- 1,70 \times 0,60 = - 1,02$
 $- 3,60 \times 2,70 = - 9,72$
 $TC = 66,28$
 $50,71 - 4,51 / 77$



COTAS PL. PISO