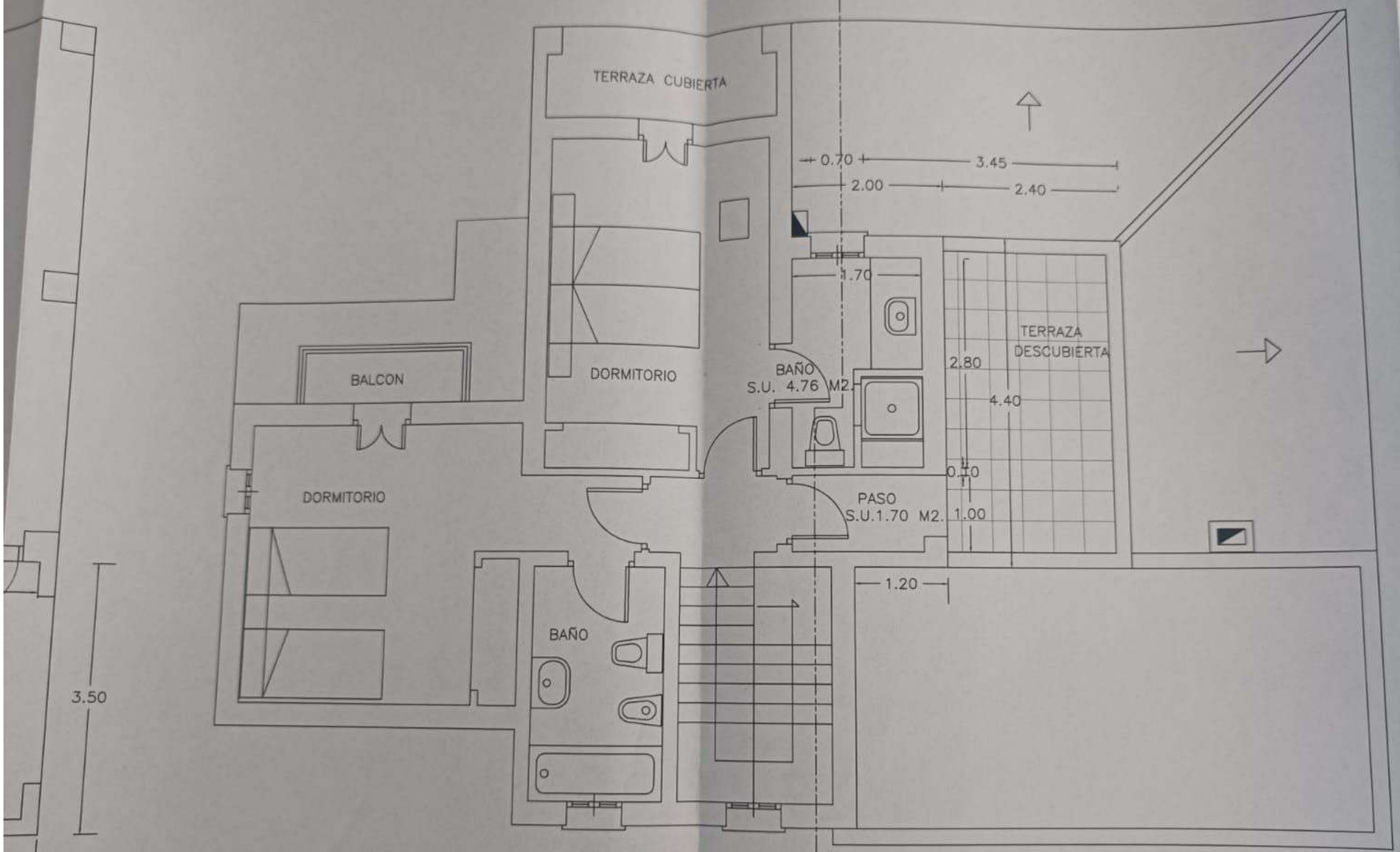


PLANTA BAJA

SUP. CONSTRUIDA AMPLIADA GARAJE	23.10 M2.
SUP. TERRAZA 50%	2.80 M2.
<b>TOTAL</b>	<b>25.90 M2.</b>
SUP. CONSTRUIDA INICIAL	96.38 M2.
<b>TOTAL RESULTANTE</b>	<b>122.28 M2.</b>



PLANTA PISO

SUP. CONSTRUIDA AMPLIADA	8.80 M2.
SUP. CONSTRUIDA INICIAL	58.52 M2.
TOTAL RESULTANTE	<u>67.32 M2.</u>