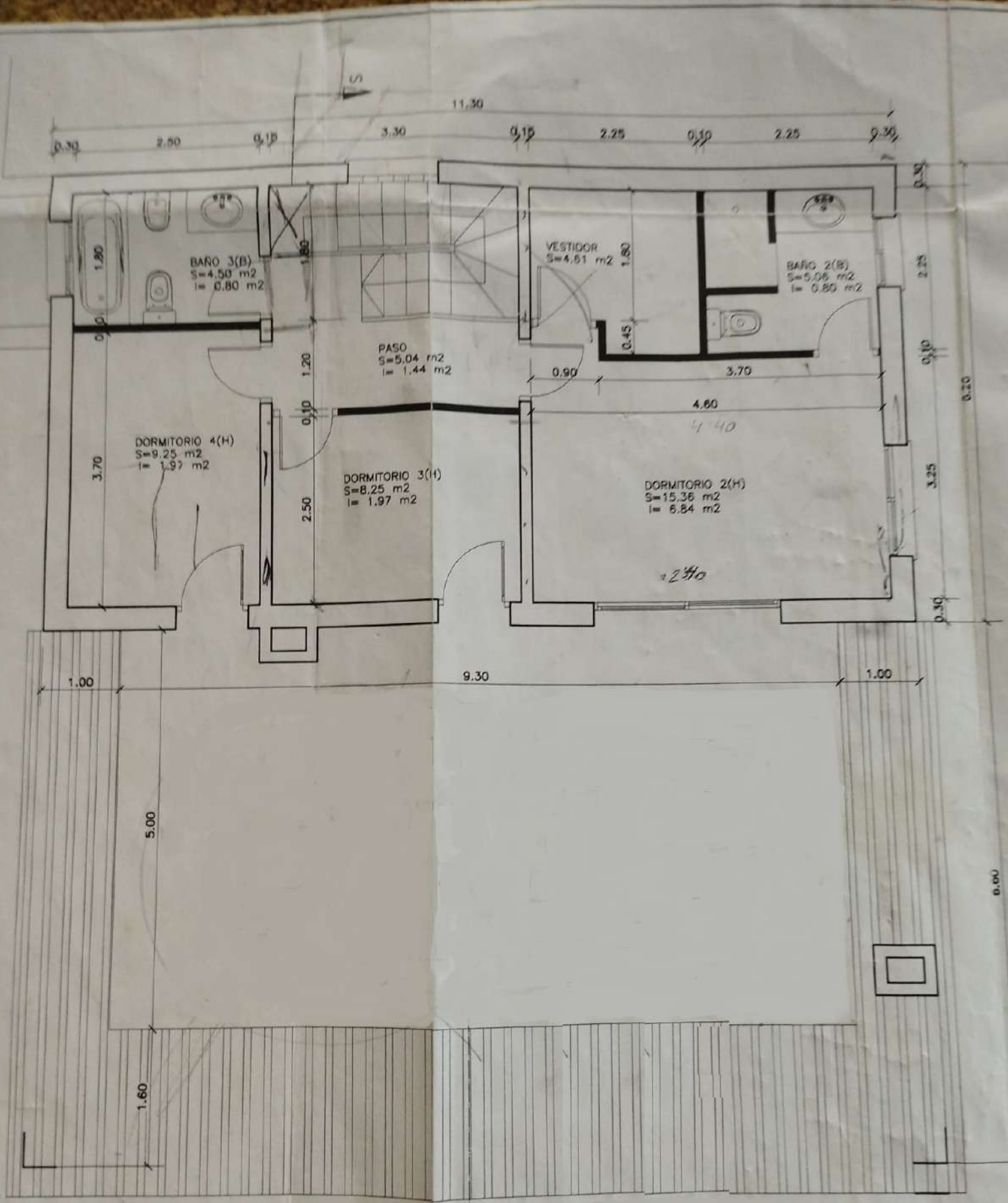
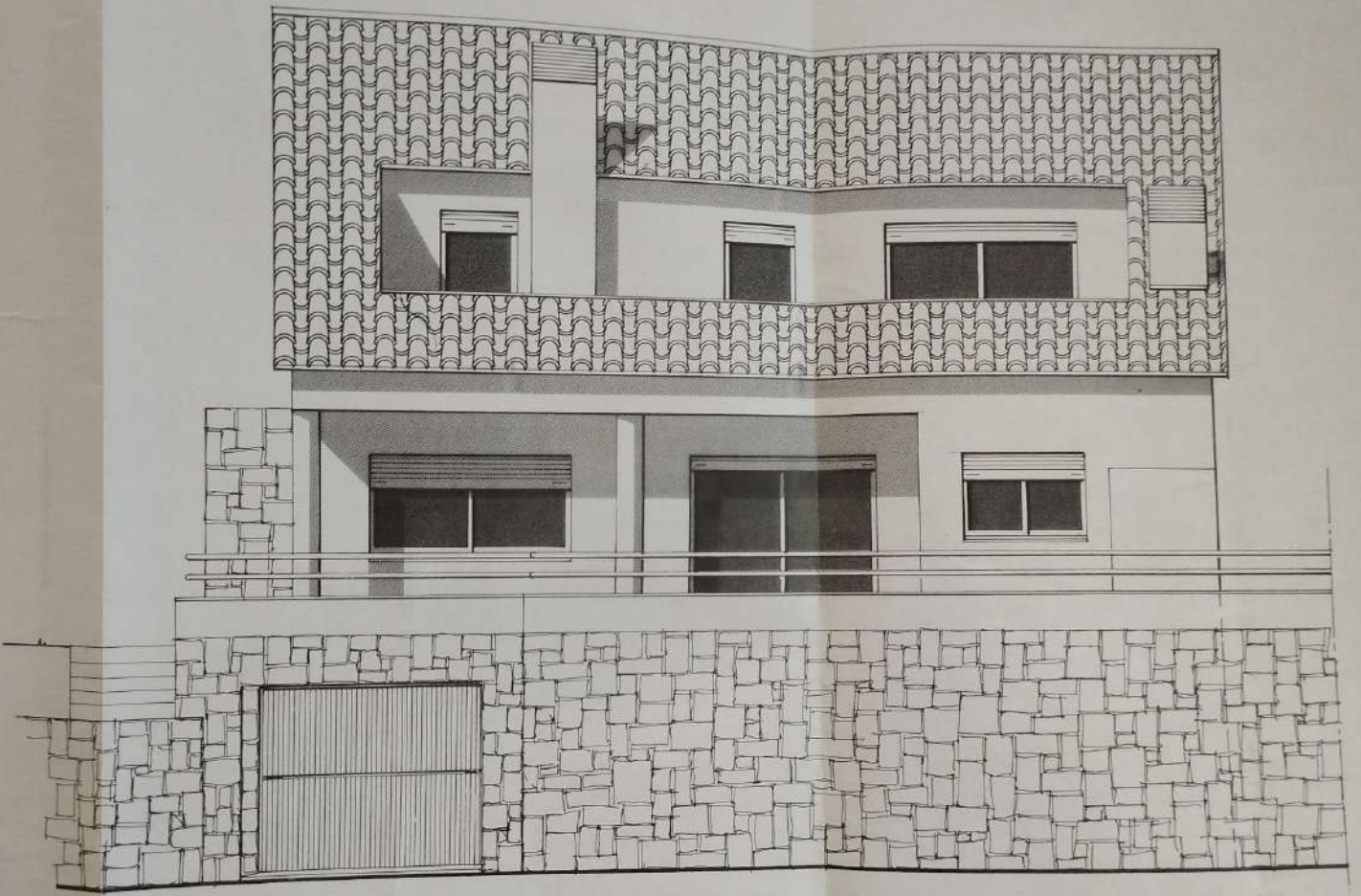


PLANTA BAJA

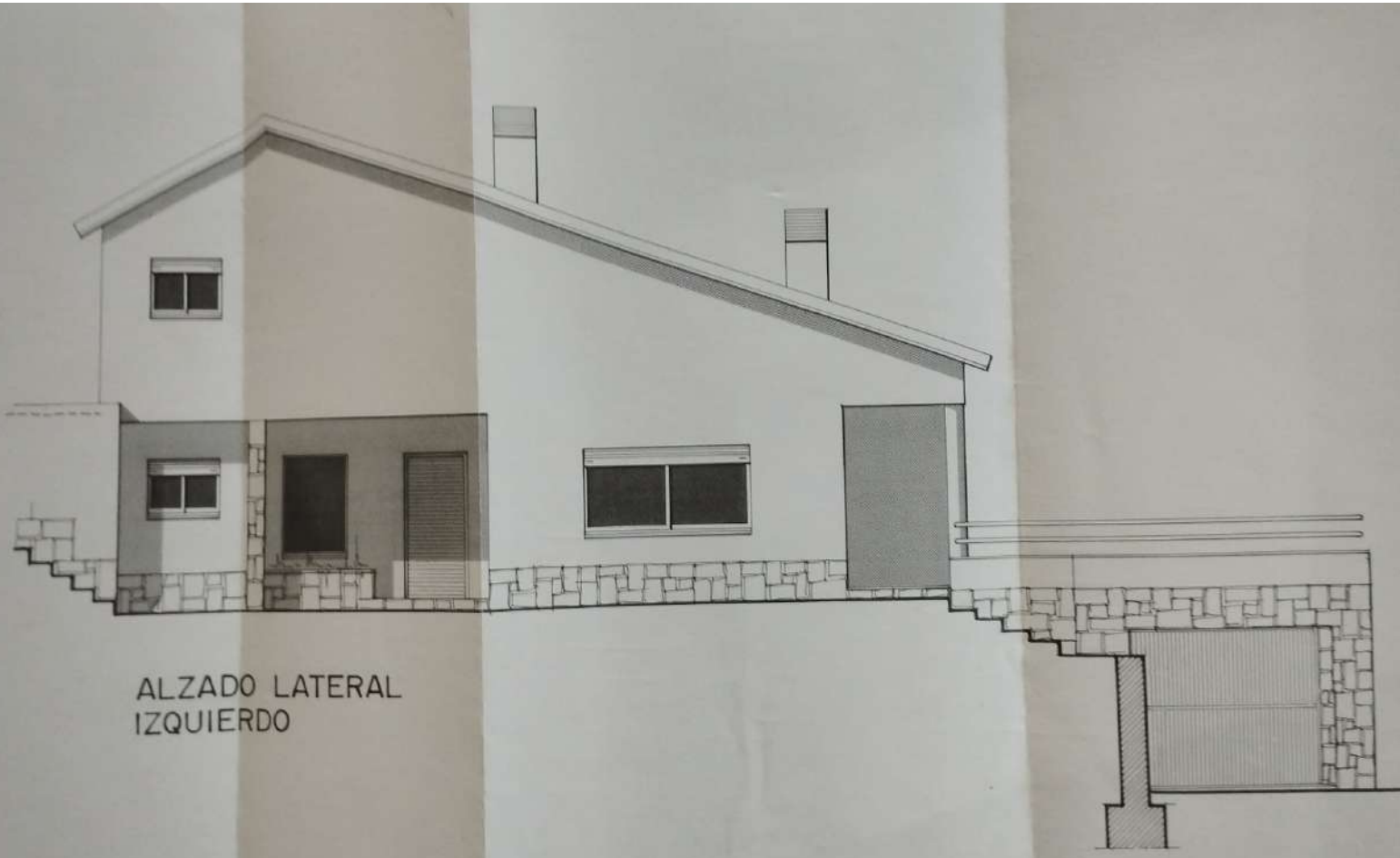
SUP. CONSTRUIDA VIVIENDA: 111.70 m²
 SUP. CONSTRUIDA PORCHES: 32.94 m²



PLANTA PRIMERA
 SUP. CONSTRUIDA VIVIENDA: 65.20 m²



ALZADO ANTERIOR



ALZADO LATERAL
IZQUIERDO